

REIT WATCH

S-Reits commence Q1 reporting season on a positive start

By Raphael Lim

THE reporting season for Singapore real estate investment trusts (S-Reits) kicked off with Alpha Integrated Reit and Keppel DC Reit releasing their Q1 FY2026 business updates on Thursday (Apr 16).

This was followed by Core US Reit's business update the next day, with all three S-Reits highlighting improvements in operating or financial metrics.

A further 25 S-Reits have also confirmed that they will report their financial results or business updates between Apr 21 and May 13. Among them, four will report full-year financial results, two will report first-half financial results, and another 19 will provide quarterly business updates.

Alpha Integrated Reit delivered a steady operating performance in

Q1 FY2026, supported by proactive lease management, with committed portfolio occupancy rising to 91.4 per cent as at Mar 2026, from 86.4 per cent a year earlier.

The Reit also recorded strong rental growth, with portfolio rental reversion of 12 per cent in Q1, with positive rental reversion across all asset clusters. Capital management metrics also improved, with all-in financing costs falling to 3.85 per cent from 4.57 per cent a year ago, while interest coverage ratio rose to four times, from 3.2 times over the same period.

Meanwhile, Keppel DC Reit posted stronger earnings in Q1 FY2026, with distribution per unit rising 13.2 per cent, supported by higher gross revenue and a 19.4 per cent increase in net property income (NPI). This was driven by earnings contributions from the acquisition

of Tokyo Data Centre 3, as well as strong portfolio performance.

The Reit's portfolio occupancy was stable at 95.6 per cent, while it also recorded portfolio rental reversion of 51 per cent during the quarter.

Keppel DC Reit's manager noted that the Reit has strong income visibility, underpinned by renewal of major contracts in 2024 and 2025, with only around 6 per cent of rental income up for renewal per annum in 2026 and 2027.

It also expects limited first-order impact from the ongoing Middle East conflict, given that net electricity costs account for less than 3 per cent of operating expenses, and are largely hedged through power procurement contracts until end-2026.

Elsewhere, Core reported a 4.3 per cent improvement in income

GAINERS

| | CLOSE | UP | % | BY CENTS | 52w high/low |
|--------------------|-------|--------|------|---------------|--------------|
| SPDR S&P500 US\$ | 70324 | 2951.9 | 3.4 | 70340/51800 | |
| SS SPDR DJIA USD | 48798 | 1140.6 | 1.9 | 50384/38588 | |
| GLD US\$ | 44210 | 901.8 | 1.6 | 51400/28800 | |
| GLD S&G\$ | 56139 | 639.0 | 1.2 | 64860/37400 | |
| Prudential USD | 1510 | 317.6 | 19.8 | 1510/883 | |
| | CLOSE | % | UP | BY PERCENTAGE | 52w high/low |
| 17LIVE W281207 | 0.5 | 400.0 | 0.4 | 3.2/0.1 | |
| Clearbridge | 0.2 | 100.0 | 0.1 | 0.5/0.1 | |
| NIO 5xLongSG271021 | 36 | 60.0 | 13.5 | 206/6.7 | |
| Datapulse Tech | 16 | 58.4 | 5.9 | 17.5/10.1 | |
| Rex Intl | 10.4 | 42.5 | 3.1 | 23/5 | |

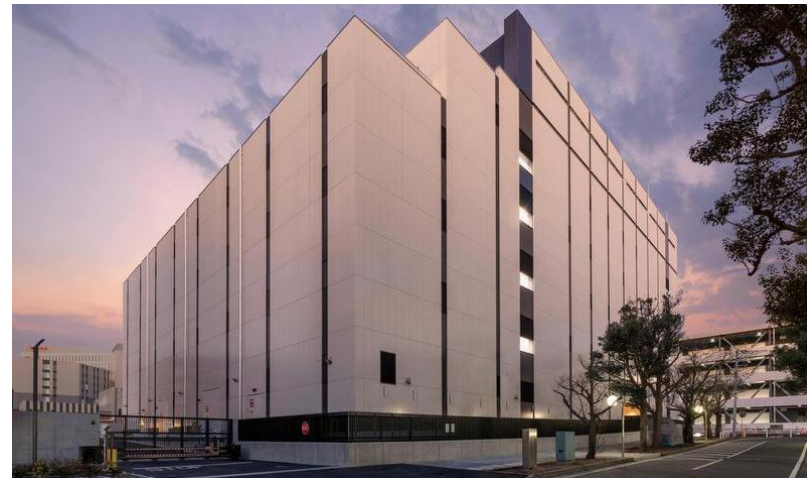
LOSERS

| | CLOSE | DOWN | % | BY CENTS | 52w high/low |
|----------------------|-------|-------|------|---------------|--------------|
| Jardine C&C | 3392 | -53.0 | -1.5 | 3630/2360 | |
| JMH USD | 7286 | -50.8 | -0.5 | 8250/4148 | |
| Keppel 5xLongSG27070 | 402 | -32.0 | -7.4 | 796/77 | |
| DFIRG USD | 407 | -27.9 | -5.1 | 482/238 | |
| Keppel | 1193 | -20.0 | -1.6 | 1325/612 | |
| | CLOSE | % | DOWN | BY PERCENTAGE | 52w high/low |
| Katrina W281008 | 0.4 | -84.0 | -2.1 | 2.5/0.4 | |
| OCBC BK MB ePW260630 | 0.2 | -80.0 | -0.8 | 5.5/0.2 | |
| Joyas Intl | 0.1 | -50.0 | -0.1 | 0.3/0.1 | |
| OIO | 2.8 | -47.2 | -2.5 | 8.8/2.8 | |
| CLIFFE MBEPW260602 | 1.9 | -42.4 | -1.4 | 4.1/1.3 | |

UNUSUAL ACTIVITY

| | VOL | CLOSE\$ | CHANGE | +/- |
|-----------------|-----------|---------|--------|--------|
| GCCP | 1,000.0 | 0.004 | -0.001 | -20.00 |
| OIO | 6.0 | 0.028 | -0.007 | -20.00 |
| Rex Intl | 220,192.5 | 0.104 | +0.023 | +28.40 |
| CONCORD NE | 3,208.5 | 0.046 | +0.005 | +12.20 |
| Jutian Chemical | 32,754.9 | 0.026 | +0.002 | +8.33 |
| LS 2 Holdings | 1,254.8 | 0.078 | -0.010 | -11.36 |
| MeGroup | 541.0 | 0.100 | -0.018 | -15.25 |
| Koh Bros | 3,304.6 | 0.410 | +0.055 | +15.49 |
| Jadason | 9,263.0 | 0.022 | -0.003 | -12.00 |
| Micro-Mechanics | 1,294.3 | 3.180 | +0.310 | +10.80 |

Shows the stocks with the highest combination of price change and of daily activity relative to the three-month average volume



Keppel DC Reit's Tokyo Data Centre 3. The Reit posted stronger earnings in Q1 FY2026, with its distribution per unit rising 13.2%.

PHOTO: KEPPEL DC REIT

available for distribution, as gross revenue and NPI grew.

The Reit reported portfolio rental reversion of 0.8 per cent, while portfolio occupancy slipped slightly to 85.1 per cent due to a vacancy in its Westpark Portfolio, but the manager noted that negotiations were underway to backfill a portion of the space.

Kore's manager observed that US office leasing activity has re-

hed post-pandemic highs, and is projected to pick up further through 2026, supported by lease expiries and constrained new supply. It added that office led 2025 price growth across major asset classes, with rebounding transaction volumes and selective large deals – momentum that could extend into 2026.

S-Reits faced headwinds in Q1 2026, with the iEdge S-Reit Index

falling 8 per cent amid investor concerns of stagflation following the Middle East conflict. However, the index has since rebounded 5.2 per cent in the second quarter to date.

Despite the macro uncertainty, analysts from DBS Group Research noted in an end-March report that S-Reits are coming from a position of relative strength, with largely stabilised balance sheets, a high proportion of fixed or hedged debt, and favourable refinancing dynamics.

The analysts added that the stagflationary background may curb sentiment and near-term re-rating, but they see limited broad earnings downside absent a sustained, material rise in Singdollar interest rates, and favour S-Reits with earnings visibility, strong tenant quality and embedded rental growth. SGX RESEARCH

The writer is a research analyst at SGX. For more research and information on Singapore's Reit sector, visit sgx.com/research-education/sectors-for-the-S-Reits-Property-Trusts-Chartbook.

STI STOCKS

| Stock name | Close | Change | Wk high/low | 52w high | 52w low | PE | Div yield | Mcap |
|----------------------|---------|--------|-------------|----------|---------|------|-----------|----------|
| CapLand Ascendas REI | 258 | +4 | 261/252 | 291.5 | 241.6 | 15.2 | 5.8 | 13066.4 |
| CapLand IntCom T | 239 | +4 | 242/234 | 257 | 202 | 18.9 | 4.8 | 19126.6 |
| CapitalLandInvest | 285 cd | +3 | 288/278 | 318 | 248 | 98.3 | 4.2 | 14829.1 |
| CityDev | 838 cd | -4 | 851/831 | 1009 | 466 | 12.1 | 3.3 | 7619.9 |
| DBS Grp | 5725 | -10 | 5788/5713 | 6000 | 4098 | 14.8 | 5.3 | 162975.7 |
| DFIRG USD | US407 | -22 | 436/406 | 482 | 238 | 23.4 | 11.2 | 5509.4 |
| Fraser's Cpt Tr | 229 | +5 | 230/223 | 247 | 213 | 21.9 | 5.3 | 4663.7 |
| Fraser's L&C Tr | 97.5 | +4.5 | 98/92 | 105 | 77.5 | 17.9 | 6.1 | 3701.1 |
| Genting Sing | 71 cd | +2.5 | 71.5/68 | 81 | 66 | 22 | 5.6 | 8723.4 |
| HongkongLand USD | US804 | -4 | 818/782 | 912 | 410 | 13.9 | 2.4 | 18916.6 |
| JMH USD | US7286 | -40 | 7477/7139 | 8250 | 4148 | 19.3 | 2.5 | 21571.5 |
| Keppel | 1193 cd | -20 | 1224/1187 | 1325 | 612 | 27.4 | 3.9 | 21742 |
| Keppel DC Reit | 235 | +4 | 239/229 | 244 | 200.2 | 12.6 | 4.5 | 6178.3 |
| Mapletree Ind Tr | 206 | +6 | 207/198 | 223 | 190 | - | 6.6 | 6121.8 |
| Mapletree Log Tr | 125 | +6 | 127/117 | 137 | 107 | - | 6.4 | 6255.7 |
| Mapletree PanAsia Co | 141 | +4 | 144/135 | 150 | 115 | - | 5.7 | 8882.3 |
| OCBC Bank | 2272 cd | +25 | 2310/2231 | 2310 | 1576 | 13.9 | 4.4 | 102579.4 |
| SATS | 355 | -9 | 363/354 | 400 | 269 | 21.6 | 1.5 | 5305.3 |
| SGX | 2133 | +24 | 2140/2065 | 2140 | 1357 | 35.2 | 1.8 | 22858.1 |
| SIA | 655 | -9 | 665/653 | 763 | 623 | 7.3 | 6.1 | 20676.3 |
| ST Engineering | 1127 cd | -14 | 1142/1116 | 1163 | 701 | 75.9 | 2 | 35189.5 |
| Seatrium Ltd | 242 cd | -4 | 249/242 | 251 | 182 | 25.3 | - | 8256.6 |
| Sembcorp Ind | 698 cd | +9 | 720/687 | 793 | 560 | 12.6 | 3.6 | 12489.3 |
| Singtel | 481 | -7 | 493/475 | 527 | 367 | 19.8 | 3.5 | 79435.6 |
| ThaiBev | 42 | -1 | 43.5/41.5 | 52 | 41.5 | 10.2 | 1.8 | 10555.3 |
| UOB | 3740 cd | +1 | 3783/3713 | 3950 | 3325 | 13.6 | 4.2 | 63053.5 |
| UOL | 1016 cd | +11 | 1043/995 | 1148 | 561 | 17.8 | 2.5 | 8613 |
| Venture Corp | 1639 cd | +44 | 1640/1576 | 1698 | 1080 | 20.8 | 4.9 | 4783.8 |
| Wilmar Intl | 384 cd | -3 | 390/379 | 402 | 278 | 13.2 | 3.6 | 24589.1 |
| YJZ Shipbldg SGD | 409 cd | +7 | 410/395 | 462 | 201 | 10.2 | 4.9 | 16233.6 |

Most Active

| | VOLUME |
|------------------|---------------|
| Addvalue Tech | 582,894,700 |
| Capital World | 466,564,800 |
| Rex Intl | 330,622,100 |
| Koh Eco | 293,869,800 |
| IX Biopharma | 282,980,400 |
| Market volume | 8,883,419,000 |
| | VALUE (\$) |
| DBS Grp | 1,372,897,620 |
| Singtel | 969,904,668 |
| OCBC Bank | 717,050,063 |
| UOB | 381,467,197 |
| CapLand IntCom T | 325,696,750 |
| Market value | 9,829,894,000 |

OTHER SINGAPORE INDICES

| | Apr 17 | VALUE | +/-% |
|-------------------|------------|--------|------|
| BT OB/OS | 552.00 | +71.00 | |
| BT CADI | -113734.00 | -36.00 | |
| BT 10-day MA | -113936.00 | +55.00 | |
| FTSE ST Mid Cap | 765.35 | -0.89 | |
| FTSE ST Small Cap | 325.85 | -0.94 | |
| FTSE ST All Share | 1138.86 | -2.11 | |
| FTSE ST China | 290.92 | -1.34 | |
| FTSE ST Catalyst | 219.63 | -2.96 | |
| FTSE ST Maritime | 237.71 | - | |
| SIMSCI Futures | 452.95 | -0.40 | |
| TR/SGX SFI | 162.68 | +0.01 | |

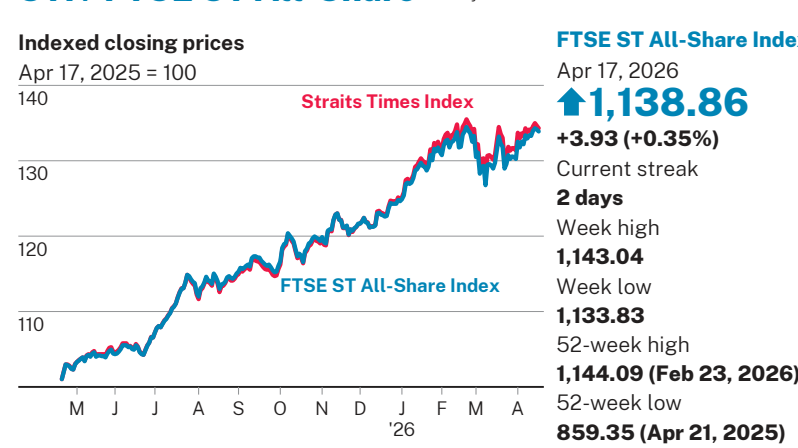
Source for FTSE ST Indices: Interactive Data

SGX ETFs

Most Active

| Fund | Last sale | +/- | '000 | Wk high/low | 52w high/low | Buy/Sell | Mcap |
|--------------------------|-----------|------|-------|-------------|--------------|-------------|------|
| Lion-OCBC Sec HSTECH S\$ | 80 | +2.5 | 15352 | 81/76.3 | 108.4/74.4 | 80/80.2 | 38.1 |
| Lion-Phillip S-REIT | 84.7 | +1.9 | 7607 | 85.2/82.4 | 89.5/76.2 | 84.6/84.7 | - |
| SS SPDR STI ETF | 502.3 | -0.7 | 6323 | 507.5/499.1 | 510.9/375 | 502.3/502.8 | - |
| Amova SGD IGBond ETF | 101 | +0.5 | 5692 | 101.1/100.5 | 103.4/98.8 | 100.9/101.1 | 83.8 |
| Amova-STC ASIA REIT | 81.2 | +1.2 | 4332 | 81.5/79.8 | 85.4/74 | 81.1/81.2 | 44.9 |
| ABF SG Bond ETF | 113.9 | +0.3 | 3174 | 114.4/113.4 | 116.9/109.5 | 113.9/114.3 | 51.2 |
| CSOP iEdge SREIT ETF S\$ | 75.9 | +1.8 | 1990 | 76.5/73.8 | 81/69.3 | 75.8/75.9 | 88.7 |
| IS ASIA HYG US\$ | US668 | +4 | 1451 | 671/660 | 689/648 | 668/670 | - |
| Lion_OSPL APAC Fin S\$ | 143.3 | +1.3 | 984 | 144.9/141.4 | 156/107.7 | 142.8/143.3 | - |
| Lion-OSPL Low Carbon S\$ | 140 | +3 | 704 | 140/136.7 | 148/113.5 | 139.7/140 | - |

STI / FTSE ST All-Share



iEdge S-Reit Index



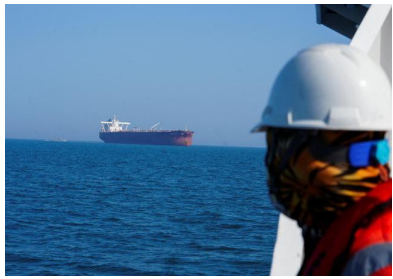
SECURITIES TRADING SCOREBOARD

| | Up | MAIN | Unch | Up | CATL | Unch | Up | TOTAL | Unch |
|-----------------|----|------|------|----|------|------|----|-------|------|
| Multi Ind | 6 | 4 | 2 | 0 | 0 | 1 | 6 | 4 | 3 |
| Manufacturing | 51 | 22 | 9 | 19 | 16 | 13 | 70 | 38 | 22 |
| Commerce | 19 | 14 | 4 | 9 | 2 | 10 | 28 | 16 | 14 |
| Tpt/Stor/Comms | 10 | 9 | 6 | 4 | 3 | 2 | 14 | 12 | 8 |
| Finance | 19 | 4 | 3 | 3 | 2 | 2 | 22 | 6 | 5 |
| Construction | 17 | 1 | 1 | 2 | 2 | 1 | 19 | 3 | 2 |
| Properties | 28 | 8 | 5 | 2 | 0 | 2 | 30 | 8 | 7 |
| Hotels/Rsts | 8 | 2 | 0 | 2 | 1 | 0 | 10 | 3 | 0 |
| Services | 34 | 14 | 11 | 22 | 18 | 16 | 56 | 32 | 27 |
| Elect/Gas/Water | 1 | 0 | 0 | 0 | 0 | 0 | 1 | 0 | 0 |
| Agriculture | 4 | 1 | 1 | 1 | 0 | 1 | 5 | 1 | 2 |
| Mining/Quarry | 2 | 0 | 0 | 6 | | | | | |

CURRENCIES

US dollar falls to multi-week lows on short-lived Hormuz reopening

THE safe-haven US dollar dropped to multi-week lows on Friday (Apr 17) as risk appetite soared after Iran said the Strait of Hormuz was open, boosting optimism that the Middle East conflict was winding down before Iran once again closed the strait on Saturday.



Shipping through the Strait of Hormuz was at a standstill on Apr 19 after Iran reasserted control over the strategic waterway. PHOTO: REUTERS

Shipping through the Strait of Hormuz was at a standstill on Sunday after Iran reasserted control over the strategic waterway that is key to global energy supply, days before a fragile ceasefire with the US was set to expire.

Iranian Foreign Minister Abbas Araghchi said in a post on X on Friday that the strait was open to all commercial vessels for the remainder of a US-brokered 10-day truce agreed between Israel and Lebanon to halt fighting between Israel and Iran-backed Hizbollah.

Shortly after Araghchi's statement, US President Donald Trump posted on Truth Social, "Iran has just announced that the strait of Iran is fully open and ready for passage". Trump told Reuters on Friday that

the US will work with Iran to recover its enriched uranium, and bring it back to America as part of any deal.

Following the announcement on Friday, oil prices plunged, Wall Street shares posted sharp gains and US Treasuries surged, pushing their yields lower.

In Friday afternoon trading, the dollar index, which measures the greenback against a basket of six currencies, fell 0.3 per cent to 97.96 after earlier dropping to 97.632, its lowest in seven weeks.

The index was down 0.6 per cent on the week on Friday, set for a second straight weekly decline; over the past two weeks, it has fallen about 2.1 per cent, its largest two-week drop since late January.

"The dollar's weakness is mainly about the market unwinding the geopolitical risk premium," said George Vessey, lead forex and macro strategist at Convera in London, before Iran's Saturday U-turn.

"I don't think we are pricing in a fundamentally weaker US dollar, because there are question marks around the Federal Reserve, what the Fed's next move is going to be after inflation came out hotter than expected. So the economy is still somewhat resilient, so it's not going to be the start of a full structural dollar decline."

Against the Japanese yen, the dollar slid 0.6 per cent to 158.22 after earlier climbing to 159.86. It was on track on Friday to post its largest weekly drop in nine weeks.

Bank of Japan governor Kazuo Ueda steered clear of signalling a rate

hike was on the cards this month, instead pointing to low real interest rates and robust corporate profits, reinforcing expectations the bank will hold policy steady at least until June.

The euro, on the other hand, was up 0.1 per cent at US\$1.1789, after earlier touching 1.1848, an eight-week peak. On Friday, the single currency was up 0.6 per cent on the week, and on course for a third consecutive weekly rise.

Money markets on Friday scaled back bets on future European Central Bank rate hikes, fully pricing the first move in July, from June earlier in the session. They now assign less than a 5 per cent chance of a rate rise at this month's meeting, down from 15 per cent.

In the US, rate futures on Friday priced in a more than 50 per cent chance that the Fed will lower interest rates in December, up from 29.5 per cent in the previous session.

In other currencies, sterling on Friday firmed 0.1 per cent to US\$1.3546, on pace for a second straight week of gains. The risk-sensitive Australian dollar rose 0.2 per cent to US\$0.7178, staying near four-year highs, while the New Zealand currency was flat at US\$0.5889. REUTERS

INTERBANK CURRENCY RATES

| Currencies | Against S\$ | | Against US\$ | |
|-------------------|-------------|--------|--------------|--------|
| | Bid | Offer | Bid | Offer |
| Australian dollar | 0.9125 | 0.9133 | 0.7170 | 0.7172 |
| Canadian dollar | 0.9301 | 0.9309 | 0.7310 | 0.7309 |
| Euro | 1.4993 | 1.5004 | 1.1781 | 1.1783 |
| NZ dollar | 0.7491 | 0.7499 | 0.5886 | 0.5889 |
| Sterling pound | 1.7207 | 1.7221 | 1.3521 | 1.3524 |
| US dollar | 1.2726 | 1.2734 | - | - |

S\$ to 100 units of foreign currency:

| | | | | |
|-------------------|----------|----------|----------|----------|
| Chinese renminbi | 18.6396 | 18.6519 | 14.6469 | 14.6473 |
| Danish kroner | 20.0624 | 20.0773 | 15.7649 | 15.7667 |
| Hong Kong dollar | 16.26 | 16.27 | 12.7732 | 12.7733 |
| Indian rupee | 1.37 | 1.37 | 1.0776 | 1.0778 |
| Indonesia rupiah | 0.0074 | 0.0074 | 0.0058 | 0.0058 |
| Japanese yen | 0.7988 | 0.7994 | 0.6277 | 0.6277 |
| Korean won | 0.0858 | 0.0859 | 0.0674 | 0.0675 |
| Malaysian ringgit | 32.14 | 32.20 | 25.2525 | 25.2845 |
| New Taiwan dollar | 4.0262 | 4.0326 | 3.1638 | 3.1668 |
| Norwegian krone | 13.5915 | 13.6198 | 10.6801 | 10.6956 |
| Philippine peso | 2.1187 | 2.1214 | 1.6648 | 1.6660 |
| Saudi riyal | 33.9215 | 33.9474 | 26.6553 | 26.6588 |
| Swedish krona | 13.8406 | 13.8518 | 10.8758 | 10.8778 |
| Swiss franc | 162.4665 | 162.5894 | 127.6650 | 127.6813 |
| Thai baht | 3.9608 | 3.9670 | 3.1124 | 3.1153 |

Source: OCBC

USS/\$\$ FORWARD RATES

| | Apr 17 | |
|----------|--------|--------|
| | Bid | Offer |
| 1-month | 1.2699 | 1.2708 |
| 2-months | 1.2671 | 1.2679 |
| 3-months | 1.2644 | 1.2653 |
| 6-months | 1.2562 | 1.2572 |

Source: OCBC

FOREX RATES

INTERBANK CROSS RATES

| | AS | CS | Rmb | Euro | HKS | Ind Rs | Rupiah | Yen | Won | MS | NZS | Pak Rs | Peso | SS | Rand | Sfr | NTS | Baht | Pound | US\$ | |
|---------------|-------|-------|-------|-------|--------|---------|---------|-------|--------|-------|-------|---------|--------|-------|--------|-------|--------|--------|-------|-------|-------|
| Australia | - | 0.981 | 4.896 | 0.609 | 5.614 | 66.542 | 123.234 | 1.142 | 10.631 | 2.838 | 1.218 | 199.945 | 43.059 | 0.913 | 11.756 | 0.562 | 22.665 | 23.030 | 0.530 | 0.717 | |
| Canada | 1.019 | - | 4.991 | 0.620 | 5.723 | 67.828 | 125.617 | 1.164 | 10.836 | 2.893 | 1.242 | 203.812 | 43.891 | 0.931 | 11.983 | 0.573 | 23.093 | 23.475 | 0.541 | 0.731 | |
| China | 0.204 | 0.200 | - | 0.124 | 1.147 | 13.591 | 25.171 | 0.233 | 2.171 | 0.580 | 0.249 | 40.840 | 8.795 | 0.186 | 2.401 | 0.115 | 4.627 | 4.704 | 0.108 | 0.146 | |
| Euro | 1.643 | 1.612 | 8.044 | - | 9.224 | 109.328 | 202.474 | 1.877 | 17.467 | 4.663 | 2.001 | 328.512 | 70.746 | 1.500 | 19.314 | 0.923 | 37.223 | 37.838 | 0.871 | 1.178 | |
| Hong Kong | 0.178 | 0.175 | 0.872 | 0.108 | - | 11.853 | 21.951 | 0.203 | 1.894 | 0.506 | 0.217 | 35.615 | 7.670 | 0.163 | 2.094 | 0.100 | 4.035 | 4.102 | 0.094 | 0.128 | |
| India | 0.015 | 0.015 | 0.074 | 0.009 | 0.084 | - | 1.852 | 0.017 | 0.160 | 0.043 | 0.018 | 3.005 | 0.647 | 0.014 | 0.177 | 0.008 | 0.340 | 0.346 | 0.008 | 0.011 | |
| Indonesia | 0.008 | 0.008 | 0.040 | 0.005 | 0.046 | 0.540 | - | 0.009 | 0.086 | 0.023 | 0.010 | 1.622 | 0.349 | 0.007 | 0.095 | 0.005 | 0.184 | 0.187 | 0.004 | 0.006 | |
| Japan | 0.875 | 0.859 | 4.286 | 0.533 | 4.914 | 58.248 | 107.875 | - | 9.306 | 2.484 | 1.066 | 175.026 | 37.692 | 0.799 | 10.290 | 0.492 | 19.832 | 20.159 | 0.464 | 0.628 | |
| Korea | 0.094 | 0.092 | 0.461 | 0.057 | 0.528 | 6.259 | 11.592 | 0.107 | - | 0.267 | 0.115 | 18.808 | 4.050 | 0.086 | 1.106 | 0.053 | 2.131 | 2.166 | 0.050 | 0.067 | |
| Malaysia | 0.352 | 0.346 | 1.725 | 0.214 | 1.978 | 23.447 | 43.424 | 0.403 | 3.746 | - | 0.429 | 70.455 | 15.173 | 0.322 | 4.142 | 0.198 | 7.983 | 8.115 | 0.187 | 0.253 | |
| New Zealand | 0.821 | 0.805 | 4.020 | 0.500 | 4.609 | 54.632 | 101.177 | 0.938 | 8.728 | 2.330 | - | 164.158 | 35.352 | 0.749 | 9.651 | 0.461 | 18.600 | 18.908 | 0.435 | 0.589 | |
| Pakistan | 0.005 | 0.005 | 0.024 | 0.003 | 0.028 | 0.333 | 0.616 | 0.006 | 0.053 | 0.014 | - | 0.006 | - | 0.215 | 0.005 | 0.059 | 0.003 | 0.113 | 0.115 | 0.003 | 0.004 |
| Philippines | 0.023 | 0.023 | 0.114 | 0.014 | 0.130 | 1.545 | 2.862 | 0.027 | 0.247 | 0.066 | 0.028 | 4.644 | - | 0.021 | 0.273 | 0.013 | 0.526 | 0.535 | 0.012 | 0.017 | |
| Singapore | 1.095 | 1.075 | 5.363 | 0.667 | 6.150 | 72.893 | 134.996 | 1.251 | 11.646 | 3.109 | 1.334 | 219.030 | 47.168 | - | 12.878 | 0.615 | 24.818 | 25.228 | 0.581 | 0.786 | |
| South Africa | 0.085 | 0.083 | 0.416 | 0.052 | 0.478 | 5.660 | 10.483 | 0.097 | 0.904 | 0.241 | 0.104 | 17.009 | 3.663 | 0.078 | - | 0.048 | 1.927 | 1.959 | 0.045 | 0.061 | |
| Switzerland | 1.780 | 1.747 | 8.717 | 1.084 | 9.995 | 118.471 | 219.406 | 2.034 | 18.927 | 5.053 | 2.169 | 355.985 | 76.662 | 1.625 | 20.930 | - | 40.336 | 41.002 | 0.944 | 1.277 | |
| Taiwan | 0.044 | 0.043 | 0.216 | 0.027 | 0.248 | 2.937 | 5.439 | 0.050 | 0.469 | 0.125 | 0.054 | 8.826 | 1.901 | 0.040 | 0.519 | 0.025 | - | 1.017 | 0.023 | 0.032 | |
| Thailand | 0.043 | 0.043 | 0.213 | 0.026 | 0.244 | 2.889 | 5.351 | 0.050 | 0.462 | 0.123 | 0.053 | 8.682 | 1.870 | 0.040 | 0.510 | 0.024 | 0.984 | - | 0.023 | 0.031 | |
| UK | 1.886 | 1.850 | 9.232 | 1.148 | 10.587 | 125.479 | 232.384 | 2.154 | 20.047 | 5.352 | 2.297 | 377.041 | 81.197 | 1.721 | 22.168 | 1.059 | 42.722 | 43.428 | - | 1.352 | |
| United States | 1.395 | 1.368 | 6.827 | 0.849 | 7.829 | 92.793 | 171.850 | 1.593 | 14.825 | 3.958 | 1.699 | 278.825 | 60.046 | 1.273 | 16.393 | 0.783 | 31.593 | 32.115 | 0.740 | - | |

The figures are based on mid prices of currencies quoted by OCBC. For Rupiah, Yen and Won, the figures are in 100 units of the foreign currency indicated. Among the three currencies themselves, the exchange rate should read as it is.

EQUITY BONDS WARRANTS FUTURES

SGX DERIVATIVES TRADING

| | OPEN | HIGH | LOW | SETT | VOL | OPINT |
|--|----------|----------|----------|----------|--------|--------|
| SGX MSCI Singapore Index Futures | | | | | | |
| Apr26 | 453.40 | 454.05 | 450.90 | 452.95 | 21185 | 202342 |
| May26 | 450.10 | 450.10 | 450.10 | 450.60 | 2 | 24 |
| SGX FTSE China A50 Index Futures | | | | | | |
| Apr26 | 15490.00 | 15498.00 | 15366.00 | 15412.00 | 314627 | 839151 |
| May26 | 15449.00 | 15463.00 | 15335.00 | 15391.00 | 4931 | 10159 |
| SGX FTSE China H50 Index Futures | | | | | | |
| Apr26 | 17145.00 | 17152.50 | 16947.50 | 17100.00 | 2131 | 2110 |
| May26 | - | - | - | 17035.00 | 0 | 201 |
| SGX FTSE Taiwan Index Futures | | | | | | |
| Apr26 | 3045.25 | 3054.25 | 3003.00 | 3025.00 | 52073 | 95579 |
| May26 | 3060.50 | 3066.00 | 3025.25 | 3035.50 | 1421 | 764 |
| SGX FTSE Indonesia Index Futures | | | | | | |
| Apr26 | 2740.000 | 2756.000 | 2730.000 | 2715.000 | 78 | 1675 |
| May26 | - | - | - | 2718.000 | 0 | 290 |
| SGX FTSE Blossom Japan Index Futures | | | | | | |
| Jun26 | - | - | - | 316.2000 | 0 | 1143 |
| Sep26 | - | - | - | 316.5000 | 0 | 377 |
| SGX Nikkei 225 Index Futures | | | | | | |
| Jun26 | 59565.00 | 59570.00 | 58605.00 | 58805.00 | 15215 | 60850 |
| Sep26 | 59165.00 | 59220.00 | 59165.00 | 58875.00 | 3 | 200 |
| SEA ADR Futures | | | | | | |
| Apr26 | - | - | - | - | 0 | 25 |
| May26 | - | - | - | - | 0 | 0 |
| GRAB Futures | | | | | | |
| Apr26 | - | - | - | - | 0 | 5 |
| May26 | - | - | - | - | 0 | 0 |
| TSMC ADR Futures | | | | | | |
| Apr26 | - | - | - | - | 0 | 130 |
| May26 | - | - | - | - | 0 | 0 |
| SGX Mini 10-Year Japanese Government Bond Futures | | | | | | |
| Jun26 | 130.080 | 130.120 | 129.880 | 130.060 | 2319 | 9567 |
| Sep26 | - | - | - | 130.110 | 0 | 0 |
| SGX USD/CNH (Full-Sized) Futures | | | | | | |
| May26 | 6.8072 | 6.8154 | 6.8052 | 6.8098 | 54303 | 29461 |
| Jun26 | 6.7934 | 6.8021 | 6.7920 | 6.7967 | 132474 | 175700 |
| SGX INR/USD Futures | | | | | | |
| Apr26 | 107.120 | 107.920 | 107.010 | - | 177003 | 173520 |
| May26 | 106.680 | 107.460 | 106.560 | - | 47264 | 71330 |
| SGX KRW/USD (Mini) Futures | | | | | | |
| Apr26 | .6778 | .6818 | .6717 | - | 14656 | 10073 |
| May26 | .6783 | .6786 | .6737 | - | 17165 | 14670 |
| SGX THB/USD Futures | | | | | | |
| Apr26 | 31.235 | 31.280 | 31.090 | 31.165 | 335 | 328 |
| May26 | 31.265 | 31.295 | 31.205 | 31.165 | 268 | 253 |
| SGX USD/SGD (Full-Sized) Futures | | | | | | |
| May26 | 1.27010 | 1.27040 | 1.26970 | - | 43 | 161 |
| Jun26 | 1.26790 | 1.26790 | 1.26790 | - | 13 | 26 |
| SGX TSI Iron Ore CFR China (62% Fe Fines) Index Futures | | | | | | |
| Apr26 | 106.90 | 106.90 | 106.40 | - | 5640 | 325260 |
| May26 | 106.15 | 106.30 | 105.25 | - | 61455 | 573805 |
| SGX Mysteel Shanghai Rebar (USD) Futures | | | | | | |
| Apr26 | - | - | - | - | 0 | 0 |
| May26 | - | - | - | - | 0 | 0 |
| SGX SICOM TSR20 Rubber Futures | | | | | | |
| May26 | 201.8 | 201.8 | 199.0 | 201.2 | 1536 | 4420 |
| Jun26 | 203.0 | 203.0 | 198.7 | 200.4 | 5358 | 1485 |

INSIDE INSIGHTS

CEOs of Uni-Asia and The Assembly Place build stakes

By Geoff Howie

FOR the five trading sessions spanning Apr 10 to 16, institutions were net sellers of Singapore stocks, with net institutional outflow of S\$282 million, taking the accumulated net outflow for the first half of 2026 to Apr 16 to S\$404 million.

Stocks that had the highest net institutional outflow over the five sessions included DBS, Singtel, Keppel, Thai Beverage, Jardine Matheson Holdings, Yangzijiang Shipbuilding, Sats, City Developments, CapitaLand Integrated Commercial Trust and Wilmar International.

Meanwhile, Sembcorp Industries, Venture Corporation, UMS Integration, iFast Corporation, UOB Kay Hian, Singapore Airlines, Frasers Logistics & Commercial Trust, Haw Par Corporation, Mapletree Pan Asia Commercial Trust and UOB led the net institutional inflow.

Share buybacks

Over the five sessions, 15 primary-listed companies conducted buybacks with a total consideration of S\$17.9 million.

Stoneweg Europe Stapled Trust (Sert) bought back 30,000 units on Apr 13 at 1.50 euros (S\$2.25) apiece. This takes the number of units bought back on the mandate to 6.4 million or 1.14 per cent of the total units issued as of the mandate approval date.

The manager of Sert said its buybacks remain a tactical capital management lever, used when unit prices diverge materially from intrinsic value while preserving liquidity. It also highlighted that roughly 10 million euros deployed in 2025 lifted distribution per stapled security by 1.1 per cent, illustrating the incremental impact of disciplined, opportunistic execution.

Director transactions

Over the five sessions, over 100 director interests and substantial shareholdings were filed for more than 40 primary-listed stocks. Directors or CEOs reported 12 ac-

quisitions and two disposals, while substantial shareholders recorded two acquisitions and 17 disposals.

This included CEO or director acquisitions filed for ABR Holdings, Lincotrade & Associates Holdings, Nera Telecommunications, Sasseur Real Estate Investment Trust, Soup Holdings, The Assembly Place Holdings (TAP), Uni-Asia Group and XMH Holdings.

Uni-Asia Group

Between Apr 14 and 15, Uni-Asia Group executive director and CEO Masahiro Iwabuchi acquired 40,000 shares at an average price of S\$0.925 per share. This increased Iwabuchi's direct interest in the company to 1.45 per cent from 1.4 per cent.

His preceding acquisition was in May 2025, with 454,300 shares acquired at S\$0.78 per share.

Iwabuchi, with his extensive banking and real estate experience across Asia, leads the property investment department and holds directorships across multiple group subsidiaries. He noted that the group's strategy remains anchored to its "goal pyramids" for business transformation.

While near-term conditions remain uncertain, the group's focus is on strengthening recurring income across shipping and Japan property; optimising the asset base following fleet renewal and the return of MV Glengyle; extracting cross-selling opportunities between shipping and property; and investing in people, systems and risk management to support scalable growth.

The Assembly Place

TAP's executive director and CEO Eugene Lim made on-market purchases of 105,600 shares at S\$0.24 per share on Mar 30 and 84,600 shares at S\$0.235 per share on Apr 9. Lim has a 25 per cent direct interest rate in the stock.

TAP is Singapore's largest and most diversified community living operator. Prior to the Mar 30 open, TAP posted strong maiden results, with its FY2025 revenue surging

42.4 per cent from the year before to S\$27 million and 24.2 per cent growth in adjusted net profit of S\$7.7 million (which excluded non-recurring initial public offering expenses of S\$1.1 million).

Revenue growth was driven by an increase in key count from 2,106 as at end-FY2024 to 3,422 as at end-FY2025, with average occupancy rate at 94.4 per cent during the year.

TAP has secured additional properties which are expected to add approximately 1,490 keys to its portfolio over the next two years. New projects and acquisitions include the group's first migrant workers' dormitory with 886 beds, and a property at 163 Tras Street to be converted into a 163-room hotel.

Skylink Holdings

Skylink Holdings' executive director and CEO, Wesley Shen, acquired 100,000 shares at an average price of S\$0.260 per share on Apr 8. He acquired a further 100,000 shares at an average price of S\$0.240 per share on Apr 9.

Non-independent non-executive chairman Teh Wing Kwan also acquired 100,000 shares, at an average price of S\$0.245 per share on Apr 9. Skylink chief financial officer Leonard Teh acquired 100,000 shares at an average price of S\$0.245 per share on Apr 9.

Indicative of their confidence in the business, this followed the group providing key business updates for H2 FY2026 on Apr 7.

Skylink, on its operational resilience, highlighted more long-term commercial vehicle leasing contracts, the addition of new hire-purchase financing loan books, and the completion of more repairs and maintenance and bodywork customisation jobs.

Given the structural roles of the group's core businesses within Singapore's economy and the recently announced electric vehicle initiatives, Skylink's business volume increased during H2 FY2026, and remained resilient despite heightened geopolitical risks.

The majority of the group's

leases are under long-term contracts with a diversified base of customers, which serve as a strong safeguard against market concentration and business risks.

InnoTek

InnoTek is a diversified manufacturing group with exposure across TV/display, office automation, automotive and artificial intelligence server platforms.

On Apr 15, the group announced the completion of a placement of 24.6 million new shares at S\$0.6506, raising about S\$16 million, with Maybank Securities acting as placement agent.

Following completion, the company's issued share base increased to 257.9 million shares. Lion Global Investors, a subsidiary of OCBC and a principal banker to the group, was disclosed as one of the end placees.

Net proceeds are intended mainly for acquisitions, strategic alliances, South-east Asia expansion and working capital.

In FY2025, InnoTek's revenue declined 11.8 per cent year on year to S\$209.9 million, while net profit attributable to shareholders fell to S\$2 million. The group ended the year in a net cash position of S\$57.3 million.

Automotive and TV/display demand softened, while office automation sales weakened amid project delays. Offsetting this, AI server contributions increased, with mass production for Nvidia-related and IIT products commencing in Q4 FY2025.

Management expects Nvidia, alongside associated original design manufacturers, to emerge as one of InnoTek's top 10 customer clusters. The group's FY2026 priorities include establishing a US office, higher capex for precision equipment and capacity expansion, and development of liquid-cooling solutions.

InnoTek also flagged ongoing trade and geopolitical risks, particularly in China, as a factor affecting project timing. In September 2025, InnoTek divested its 70 per cent stake in Hua Yuan Sheng

Share buybacks by primary-listed companies

Apr 10 to Apr 16, 2026

| | NUMBER OF SHARES/UNITS PURCHASED | BUYBACK CONSIDERATION (S\$) | AVG PRICE PAID PER SHARE (S\$) |
|--------------------------------|----------------------------------|-----------------------------|--------------------------------|
| SINGTEL | 56,717,423 | 11,664,902 | 0.21 |
| CHUAN HUP HOLDINGS | 410,313 | 1,707,900 | 4.16 |
| HONG FOK CORPORATION | 1,049,523 | 1,085,000 | 1.03 |
| SEATRIUM | 1,972,656 | 800,000 | 0.41 |
| THE HOUR GLASS | 1,548,548 | 617,800 | 0.40 |
| OCBC | 13,522,139 | 600,000 | 0.04 |
| TELECHOICE INTERNATIONAL | 73,853 | 350,000 | 4.74 |
| OXLEY HOLDINGS | 19,999 | 245,000 | 12.25 |
| HONG LAI HUAT GROUP | 19,938 | 223,100 | 11.19 |
| GLOBAL INVESTMENTS | 26,389 | 206,000 | 7.81 |
| UOB | 6,940,885 | 185,000 | 0.03 |
| A-SONIC AEROSPACE | 52,691 | 97,000 | 1.84 |
| SARINE TECHNOLOGIES | 7,251 | 35,000 | 4.83 |
| GHY CULTURE & MEDIA HOLDING CO | 4,173 | 29,400 | 7.05 |
| INTRACO | 2,165 | 5,690 | 2.63 |
| TOTAL | 82,367,948 | 17,851,792 | |

*Via market acquisitions

SOURCE: SGX GRAPHIC: BTVISUAL

Industrial, exiting a non-core, loss-making asset to sharpen focus on higher-value activities.

For the first 16 weeks of 2026, the stock averaged S\$1.4 million in daily trading turnover, up from around S\$70,000 a year earlier, and ranked among the top 60 stocks by net institutional inflows over the same period.

VCPlus

On Apr 14, VCPlus announced a proposed subscription raising S\$1.19 million via the issuance of 350 million new shares at S\$0.0034 per share to a private investor. Proceeds are intended to strengthen the group's financial position, improve cash flow and support working capital, with an equal split between funding its AI digital marketing business and general operating needs.

VCPlus noted that FY2025 marked a year of transition and strategic repositioning, with the group reporting a net loss of approximately S\$2.5 million, including S\$1.1 million of impairment related to legacy intangible assets and goodwill.

Revenue was affected by the non-renewal of a white-label digital asset wallet contract following its expiry in March 2025, alongside ongoing competitive pressure in digital marketing. While the group recorded net current liabilities as at Dec 31, the financial statements were prepared on a going-concern basis, supported by ongoing cost optimisation initiatives and

shareholder support.

Octopus (Apac) Holdings

On Apr 10, Octopus (Apac) Holdings (formerly GS Holdings) entered into a subscription agreement with Grupo Osborne for a proposed placement raising S\$5 million through the issuance of 73.5 million new shares at S\$0.068 per share, representing approximately 6.8 per cent of existing share capital.

Net proceeds of around S\$4.97 million are intended to strengthen liquidity, fund working capital, and support business expansion and strategic initiatives, with the investment complemented by a master distribution agreement between the subscriber and Octopus' operating subsidiaries.

The company noted that the partnership is intended to move Octopus beyond distribution into brand creation and upstream value capture, leveraging Grupo Osborne's production capabilities alongside Octopus' regional market knowledge.

It stated that jointly developed wines and spirits will be tailored for Asian consumer preferences, with economics from co-developed products shared equally between both parties, supporting a higher mix of premium, brand-led offerings.

The writer is the market

strategist at SGX. To read

SGX's market research reports, visit sgx.com/research

EQT warns of exit risks for alternative energy assets held by private equity

EQT, Europe's biggest private equity (PE) firm, said that the path to exiting investments in clean-energy developers and operators faces a growing number of hurdles.

In many cases, such assets have become too big to be absorbed by the kinds of private or industrial buyers that PE firms traditionally turn to when looking for an exit, said Alex Darden, head of EQT's infrastructure investment for the Americas.

Initial public offerings would be the natural next step, but because such companies often still have negative cash flows and complex risk profiles, the IPO route so far "hasn't been developed enough" for PE investors to feel they can easily tap it, he said in an interview.

"The IPO market remains a question mark."

Without a clearer path to exiting

holdings, PE fund managers are "going to run the risk of people not being able to invest capital in the same way in the private markets that they're currently doing", he said. At the same time, EQT will continue bankrolling clean-energy firms and "finding creative ways to monetise" such deals, he added.

Darden's comments touch on a divide playing out in the market for cleantech.

The sector has enjoyed an overall rebound, with the main S&P index for such companies gaining almost 70 per cent over the past year. But most of that rally has rested on the performance of equipment makers such as Nordex and SMA Solar Technology.

Energy developers and operators, meanwhile, have seen a different trajectory, often because their fate is tied to ongoing client



While the cleantech sector has enjoyed an overall rebound, most of that rally has rested on the performance of equipment makers. PHOTO: REUTERS

contracts and continual disruptions in the regulatory and legislative landscape.

Examples include Altus Power, a major US commercial-scale solar operator that was taken private last

year after its market value plunged by about two-thirds from a 2022 high, in large part due to delays in getting projects up and running.

"There still are active exit routes and exit opportunities, and there's still a very active buyer universe," Darden said. However, he added that "the challenge... starting to develop on the private side is that many of these companies have scaled very large".

He said that at the beginning of the decade, many clean-energy developers owned about 1 or 2 gigawatts (GW) worth of operating assets, a figure that has now soared to as much as 8 GW.

"It creates a dynamic where you've got to look for potentially multiple buyers to partner up, to be able to buy these companies."

Others have made similar observations.

Joost Bergsma, global head of clean energy at Nuveen Infrastructure, said opportunities to exit investments are still "good", but not at the same level seen four or five years ago, when there was "really a lot of interest".

What is more, "interest is quite selective" now amid an atmosphere that has become "really quite cautious", he said.

Any disruption to investments in alternative energy would risk limiting future supply, as the world struggles to adapt to the fallout of the Iran war. The failure to reach a lasting truce has injected extreme volatility into oil and gas markets, threatening to trigger a wave of inflation and higher interest rates as the conflict drags on.

As a result, investment banks including Jefferies have predicted that demand for clean-energy

assets will soar as governments and regular households look for alternatives. Firms including Brookfield Asset Management, Eurazeo and Tikehau Capital have said that their green portfolios are thriving.

In a recent interview, Natalie Adomait, chief operating officer for Brookfield's energy group, said: "What we're seeing on the ground, it's honestly never been better than it is today."

Darden said that, against that backdrop, there continues to be opportunities for financial professionals capable of navigating the current hurdles.

EQT is "very interested in trying to understand how companies within this sector can be positioned effectively for public markets - from a size standpoint, from a cash standpoint", he added, declining to offer specifics. BLOOMBERG

DIVIDENDS ANNOUNCED

| | Payment (cts) | Ex date | Rec date | Pay date | | Payment (cts) | Ex date | Rec date | Pay date | | Payment (cts) | Ex date | Rec date | Pay date | | Payment (cts) | Ex date | Rec date | Pay date |
|--------------------------|---------------|---------|----------|----------|--------------------|---------------|---------|----------|----------|-------------------|---------------|---------|----------|----------|----------------------|---------------|---------|----------|----------|
| A Lion Short Bond SS | 0.75 | 01-Apr | 02-Apr | 30-Apr | Franken | 2.75 | 30-Apr | 04-May | 14-May | Multi-Chem | 20 | 11-May | 12-May | 22-May | Sri Trang Agro ^^ | 50 | 21-Apr | 22-Apr | 08-May |
| A Lion Short Bond USS | 0.75 | 01-Apr | 02-Apr | 30-Apr | Genting Sing | 2 | 30-Apr | 04-May | 26-May | Nanofilm | 0.87 | 07-May | 08-May | 20-May | Sri Trang Gloves ^^ | 50 | 21-Apr | 22-Apr | 08-May |
| Abundance Intl | 0.04 | 29-Apr | 30-Apr | 15-May | Geo Energy Res | 0.1 | 06-May | 07-May | 14-May | New Toyo | 0.4 | 06-May | 07-May | 15-May | SS SPDR S&P500 USD # | 179.7 | 19-Mar | 20-Mar | 30-Apr |
| Amova-STC Asia REIT | 1.03 | 01-Apr | 02-Apr | 06-May | Global Inv | 14 | 14-May | 15-May | 26-Jun | Nordic | 1,075 | 07-May | 08-May | 18-May | ST Engineering | 6 | 28-Apr | 29-Apr | 13-May |
| Amova-STC A REIT USS | 1.03 | 01-Apr | 02-Apr | 06-May | Golden Agri-Res | 0.952 | 07-May | 28-May | 20-May | OCBC Bank | 42 | 23-Apr | 24-Apr | 08-May | Tal Seng Pkg | 34 | 28-May | 02-Jun | 16-Jun |
| Anchun Intl * | 12 | 29-Apr | 30-Apr | 22-May | Great Eastern | 30 | 20-Apr | 21-Apr | 06-May | OCBC Bank | 16 | 23-Apr | 24-Apr | 08-May | StarHub | 3 | 05-May | 06-May | 20-May |
| Annak | 0.3 | 07-May | 08-May | 18-May | Haw Par | 20 | 05-May | 06-May | 21-May | OKP | 1.3 | 07-May | 08-May | 26-May | StarHub | 3 | 05-May | 06-May | 20-May |
| AP Oil | 0.5 | 06-May | 07-May | 26-May | Ho Bee Land | 5 | 12-May | 13-May | 22-May | OKP | 0.7 | 07-May | 08-May | 26-May | Straco | 1.5 | 07-May | 08-May | 21-May |
| APAC Realty | 1.8 | 28-Apr | 29-Apr | 06-May | Hock Lian Seng | 1,125 | 04-May | 05-May | 15-May | QJE | 1 | 13-May | 14-May | 29-May | Tat Seng Pkg | 5 | 29-May | 02-Jun | 16-Jun |
| Aztech Gbl | 3 | 22-Apr | 23-Apr | 08-May | Hong Fok | 1 | 11-May | 12-May | 26-May | Overseas Edu | 0.7 | 08-May | 11-May | 22-May | Tat Seng Pkg | 3.5 | 14-Apr | 15-Apr | 16-Jun |
| Aztech Gbl | 8 | 22-Apr | 23-Apr | 08-May | Hong Leong Asia | 3 | 05-May | 06-May | 15-May | PropNex | 4.5 | 27-Apr | 28-Apr | 08-May | THKral | 1 | 04-May | 05-May | 19-May |
| BRC Asia | 7 | 30-Apr | 04-May | 15-May | Hong Leong Fin | 6.15 | 04-May | 05-May | 21-May | Prudential USD # | 18.89 | 26-Mar | 27-Mar | 20-May | THKral | 3.5 | 14-Apr | 15-Apr | 16-Jun |
| BRC Asia | 7 | 30-Apr | 04-May | 15-May | HongkongLand USD # | 25 | 19-Mar | 20-Mar | 13-May | QAF | 4 | 07-May | 08-May | 22-May | Tye Soon | 1,275 | 06-May | 07-May | 15-May |
| Brook Crompton | 2 | 08-May | 11-May | 29-May | Hot Kiew | 1.5 | 07-May | 08-May | 29-May | Raffles Edu | 0.4 | 06-Apr | 09-Mar | 28-Apr | UMS | 2 | 07-May | 08-May | 22-May |
| Bumitama Agri | 3.22 | 04-May | 05-May | 14-May | Hosen | 0.2 | 14-May | 15-May | 29-May | Raffles Medical | 3 | 12-May | 13-May | 22-May | Uni-Asia Grp | 1 | 14-May | 15-May | 29-May |
| Bund Center | 6.8 | 07-May | 08-May | 22-May | Hotel Grand | 1.5 | 14-May | 15-May | 29-May | RH PetroGas | 0.3 | 07-May | 08-May | 22-May | UOB | 71 | 24-Apr | 27-Apr | 08-May |
| Capitalandinvest | 12 | 04-May | 05-May | 14-May | HPL | 4 | 08-May | 11-May | 22-May | Riverstone && | 5 | 07-May | 08-May | 15-May | UOB Kay Hian | 12.3 | 07-May | 08-May | 26-May |
| CapitaLand Ascendas REIT | 0.59 | 31-Mar | 01-Apr | 30-Apr | Hyghens Pharma | 1.5 | 06-May | 07-May | 22-May | SamsudersShipping | 4.4 | 07-May | 08-May | 20-May | UOL | 19.5 | 11-May | 12-May | 22-May |
| CapitaLand Ascendas REIT | 0.044 | 31-Mar | 01-Apr | 30-Apr | InnoTek | 2 | 07-May | 08-May | 22-May | SamudersShipping | 2.15 | 07-May | 08-May | 20-May | UOL | 7 | 05-May | 06-May | 18-May |
| CapitaLand Ascendas REIT | 3,116 | 31-Mar | 01-Apr | 30-Apr | IJS Capital | 0.8 | 06-May | 07-May | 20-May | SBS Transit | 8.66 | 30-Apr | 04-May | 11-May | ValueMax | 2.68 | 07-May | 08-May | 21-May |
| CityDev | 25 | 30-Apr | 04-May | 19-May | IHH && | 5.5 | 27-May | 30-May | 30-Apr | SBS Transit | 31.99 | 30-Apr | 04-May | 11-May | Venture | 50 | 05-May | 06-May | 19-May |
| CMS * | 13.66 | 28-Apr | 29-Apr | 07-May | Indofood Agri | 1.2 | 07-May | 08-May | 28-May | Seatrium Ltd | 3 | 05-May | 06-May | 18-May | VICOM Intl | 5.3 | 29-Apr | 30-Apr | 28-May |
| ComfortDelGro | 4.59 | 04-May | 05-May | 13-May | Info-Tech | 1.95 | 30-Apr | 04-May | 15-May | Sembcorp Intd | 16 | 06-May | 07-May | 15-May | Wise Hut | 1 | 07-May | 08-May | 22-May |
| COSCO SHIP SG | 0.089 | 08-May | 11-May | 25-May | InnoTek | 2 | 07-May | 08-May | 22-May | Sheng Siong | 3.8 | 04-May | 05-May | 15-May | Wilmar Intl | 10 | 29-Apr | 30-Apr | 18-May |
| CreditBureauAsia | 2.2 | 05-May | 06-May | 22-May | ISEC | 0.58 | 11-May | 12-May | 26-May | SiC Environment | 1.1 | 07-May | 08-May | 29-May | YHL Intl | 1.72 | 07-May | 08-May | 18-May |
| Defli | 2.15 | 06-May | 07-May | 15-May | JMH USD # | 17 | | | | | | | | | | | | | |

SGX MAINBOARD

Transaction date: Apr 17

| 52-Wk | | Company | Last Sale | +/- | Vol ('000) | Week | | Div C/vr | GrYld % | Net P/E | P/BV | MCPail | 52-Wk | | Company | Last Sale | +/- | Vol ('000) | Week | | Div C/vr | GrYld % | Net P/E | P/BV | MCPail | |
|-------|------|----------------------|-----------|-------|------------|------|------|----------|---------|---------|------|--------|-------|-------|------------------------|-----------|------|------------|------|------|----------|---------|---------|-------|---------|--------|
| High | Low | | | | | High | Low | | | | | | High | Low | | | | | High | Low | | | | | | |
| 119 | 70 | 17LIVE GROUP | 91 | +14.5 | 169 | 91 | 76.5 | - | - | - | 1.4 | 167.6 | 93.5 | 34.5 | InnoTek | 87cd | +9.5 | 25270 | 88.5 | 74.5 | 1.3 | 2.3 | 34.7 | 1.1 | 236 | |
| 14.4 | 6.8 | A-Smart | 11.7 | +0.2 | 92 | 11.8 | 11.3 | - | - | 195 | 1.1 | 31.4 | 3.6 | 3.6 | Interra Resource | 3.6 | susp | - | 3.6 | 3.6 | - | - | 4.2 | 1.2 | 23.6 | |
| 55 | 19.3 | A-Sonic Aero | 55cd | +0.5 | 216 | 55 | 53.5 | 4.1 | 0.9 | 14.7 | 0.9 | 69.3 | 8.6 | 1.4 | Intri Cement | 6.8 | +0.7 | 244454 | 7.2 | 5.9 | - | - | - | 1.6 | 390 | |
| 43 | 31 | ABR | 40.5cd | +0.5 | 114 | 40.5 | 39.5 | 1.4 | 3.7 | 22.4 | 0.9 | 81.4 | 42 | 31 | JB Foods | 38 | unch | 4 | 38 | 38 | 3.7 | 1.3 | 20.9 | 0.7 | 43.2 | |
| 515 | 108 | AEM SGD | 508cd | +26 | 26753 | 515 | 471 | - | 0.3 | 94.1 | 3.2 | 1625.3 | 80 | 44 | * JMH USD | 64.5 | -1.5 | 355 | 67 | 64 | 0.7 | 0.6 | 81.6 | 0.7 | 224 | |
| 398 | 100 | AEM USD | US392cd | +46 | 4 | 398 | 346 | - | - | - | - | - | 8250 | 4148 | * KOREITUSD | US7286 | -40 | 1879 | 7477 | 7139 | 1.7 | 2.5 | 19.3 | 0.7 | 21571.5 | |
| 11.9 | 5 | AF Global | 10.9 | susp | - | 10.9 | 10.9 | - | - | - | - | - | 2.7 | 0.7 | Jadason | 2.2 | +0.6 | 101144 | 2.7 | 1.6 | - | - | - | - | 23.2 | |
| 155 | 122 | AIMS APAC Reit | 151 | +4 | 5759 | 152 | 146 | 1.3 | 6.4 | - | 1.2 | 1235.7 | 3630 | 2360 | Jardine C&C | 3392cd | -53 | 827 | 3446 | 3355 | 2.3 | 4.3 | 10.5 | 1.2 | 13405.2 | |
| 6.8 | 6.8 | AIMOS Group | 6.8 | susp | - | 6.8 | 6.8 | - | - | - | 0.2 | 14.2 | 26.5 | 16.4 | KOREITUSD | US18.9 | -0.1 | 27524 | 19.4 | 18.2 | - | - | - | 0.3 | 197.4 | |
| 360 | 360 | AMTD IDEA OV | 360 | - | - | 360 | 360 | - | - | - | - | 85.9 | 42.5 | 20 | KSH | 34.5 | +0.5 | 771 | 35 | 33.5 | - | 4.3 | - | 0.7 | 197.9 | |
| 16.8 | 12 | AP Oil | 13.9cd | -0.1 | 328 | 14 | 13.6 | 2.5 | 3.6 | 11.1 | 0.4 | 22.9 | 29.5 | 24 | Karin Tech | 25 | +0.5 | 149 | 26.5 | 24 | 1 | 2.7 | 16.3 | 0.8 | 54.1 | |
| 79.6 | 32.5 | APAC Realty | 62cd | +1 | 1116 | 62.5 | 59 | 0.9 | 3.4 | 36.9 | 1.4 | 267.2 | 55 | 6.8 | Kancana Agri | 52.5cd | +0.5 | 970 | 54.5 | 50 | - | - | 9.3 | 2.7 | 150.7 | |
| 38 | 5.6 | ASL Marine | 37.5 | +0.6 | 21499 | 38 | 30.5 | - | - | 64.7 | 3.7 | 386.8 | 25 | 7.6 | Keong Hong | 14.7 | +0.7 | 36 | 14.7 | 14 | - | - | 32 | 0.6 | 35.7 | |
| 10.5 | 1.4 | ASTI | 8.5 | +0.6 | 99089 | 9 | 7.6 | - | - | - | 1.6 | 5.8 | 56.5 | 39 | Keppel | 54 | +0.5 | 24584 | 54 | 53 | 1.3 | 7.3 | - | 4.1 | 3421.4 | |
| 22 | 13 | Abundante | 17 | +2 | 15 | 17 | 14 | - | - | - | - | 23.8 | 1325 | 612 | * Keppel DC Reit | 1193cd | -20 | 19869 | 1224 | 1187 | 0.9 | 3.9 | 27.4 | 2.1 | 2174.2 | |
| 43 | 1.7 | Acma | 30 | -7.5 | 9 | 30.5 | 30 | - | - | 20 | 5.7 | 15.3 | 244 | 200.2 | Keppel DE | 235 | +4 | 64007 | 239 | 229 | 1.1 | 4.5 | 12.6 | 1.4 | 6178.3 | |
| 33 | 19.5 | Acro HTrust | US24.5 | -1 | 1235 | 25.5 | 24 | 1.1 | - | 15.3 | 0.3 | 190.7 | 107.8 | 81.3 | Keppel RC | 92 | +1 | 41835 | 93.5 | 90.5 | 1 | 5.7 | 25.5 | 0.7 | 5530.2 | |
| 10.7 | 0.8 | Addvalue Tech | 10.6 | +1.7 | 582894 | 10.7 | 8.5 | - | - | - | 48.6 | 390.4 | 97.5 | 82.5 | Khong Guan | 88.5 | - | - | 88.5 | 88.5 | - | 1.1 | - | 0.4 | 22.8 | |
| 49.5 | 35 | Alpha Integrated REI | 49.5 | +1 | 1512 | 49 | 47 | 1.1 | 5.9 | - | - | 545.7 | 7.3 | 3.4 | King Wan | 5.5 | +0.1 | 2525 | 5.7 | 5.3 | - | - | - | 0.6 | 42.3 | |
| 12.5 | 9 | Amcorp Global | 9.9 | unch | 0 | 9.9 | 9.9 | - | - | - | 0.7 | 44.3 | 63.5 | 34.5 | KingsmenCreative | 62cd | +2 | 712 | 63.5 | 59.5 | 6.5 | 3.2 | 9.5 | 1 | 125.2 | |
| 28 | 0.4 | AnAn Intl | 2.1 | -0.1 | 13922 | 2.4 | 2 | - | - | - | 0.7 | 88.9 | 36 | 19 | Koda | 34 | - | - | 34 | 34 | - | - | - | - | 0.5 | 28.3 |
| 53 | 31.5 | Anchun Intl | 45.5cd | -1 | 4 | 47.5 | 45 | - | - | 4.9 | 10.4 | 36.8 | 41 | 13.6 | Koh Bros | 41 | +6 | 16488 | 41 | 33.5 | - | - | - | - | 0.7 | 196.6 |
| 72 | 12.2 | Ascend Bridge | 17.6 | -0.4 | 150 | 19.9 | 14.6 | - | - | - | 0.5 | 27.7 | 108 | 45 | LHN | 59.5 | -1 | 2580 | 61.5 | 59.5 | 4.7 | 3.4 | 6.4 | 1.1 | 256.2 | |
| 17.9 | 11.5 | Asia Enterprises | 15cd | +0.3 | 12 | 15 | 14.5 | 0.4 | 2 | 42.9 | 0.6 | 5.2 | 115 | 78 | LHT | 110cd | unch | 209 | 110 | 109 | 1.6 | 16.4 | 13.5 | 1.1 | 58.6 | |
| 11 | 7.9 | Asian Pay TV Tr | 8.8 | +0.1 | 2073 | 8.8 | 8.6 | 1 | 11.9 | - | - | 159 | 2.8 | 0.6 | Landmark REIT | 0.7 | unch | 22291 | 0.7 | 0.6 | - | - | - | - | 0.1 | 116.9 |
| 4.9 | 3.1 | Aspen | 3.2 | unch | 875 | 3.3 | 3.1 | - | - | 3.2 | 0.4 | 34.7 | 0.4 | 0.1 | Le Tree Holdings | 0.3 | -0.1 | 918 | 0.4 | 0.3 | - | - | - | - | 28.9 | |
| 14.4 | 5.7 | Aspial Corp | 12.9 | +2.1 | 4511 | 13.2 | 10.8 | 0.8 | 2.3 | 51.6 | 6.8 | 477.1 | 5.4 | 0.8 | Leader Env | 1.3 | +0.2 | 42652 | 1.5 | 1 | - | - | - | - | 4.9 | 25.9 |
| 344 | 205 | Avera | 267 | +3 | 147 | 267 | 264 | - | - | 103.1 | 6.8 | 477.1 | 65.8 | 46.4 | Lendlease Reit | 57.5 | +0.5 | 45294 | 59 | 56.5 | 0.9 | 6.3 | - | 0.8 | 2225.4 | |
| 2040 | 1134 | Awaga | 1280 | +107 | 393 | 1280 | 1134 | - | - | - | - | 2712.3 | 13.2 | 5.6 | Ley Choon | 10.8 | +1.1 | 19527 | 11.5 | 9.5 | - | - | 2.5 | 14.8 | 2.7 | 162.6 |
| 21.5 | 14.8 | Avi-Tech Hldg | 19.7 | +2.7 | 778 | 20.5 | 17 | 0.9 | 7.6 | 11.9 | 0.7 | 33.7 | 44.5 | 19.5 | Lion Asiapac | 25 | +0.5 | 14 | 26 | 24.5 | - | - | 13.3 | 0.3 | 20.3 | |
| 1728 | 1056 | Azeus | 1142 | +57 | 9 | 1150 | 1083 | 0.8 | 2.5 | 40.1 | 12.3 | 342.6 | 73.5 | 28 | Lum Chang | 62 | +8.5 | 957 | 63 | 53.5 | 1.3 | 2.4 | 31.6 | 1.4 | 238.7 | |
| 90 | 49.5 | Aztech Gbl | 85.5cd | -1.5 | 13184 | 89.5 | 85 | 0.6 | 17.5 | 9.4 | 1.9 | 661.6 | 83 | 31 | Luxking | 56 | - | - | 56 | 56 | - | - | - | 373.3 | 0.3 | 7.1 |
| 192 | 66 | B&M Hldg | 192 | - | - | 192 | 192 | - | - | - | - | 19.6 | 9.3 | 2.8 | MDR | 6.5cri | +0.5 | 19085 | 7.3 | 5.8 | 1.3 | 3.5 | 10.3 | 0.4 | 58.9 | |
| 25.5 | 12.7 | BBR | 20.5cd | +0.5 | 2105 | 21 | 19.8 | 21.8 | 1.5 | 3.1 | 0.5 | 66.6 | - | - | MDR Ltd R | - | - | - | - | - | - | - | - | - | - | - |
| 13.6 | 8.2 | BH Global | 11.4 | +0.7 | 210 | 11.5 | 8.2 | 1.3 | 4.4 | 12.7 | 0.6 | 34.2 | - | - | MDR Ltd R1 | - | - | - | - | - | - | - | - | - | - | - |
| 49 | 26 | BHG Retail Reit | 44.5 | - | - | 44.5 | 44.5 | 1.1 | 1.1 | - | 0.6 | 231.2 | 6.1 | 1.1 | MFG Integration | 2.9 | -0.1 | 40 | 2.9 | 2.9 | - | - | - | - | 1.1 | 7 |
| 478 | 290 | BRC Asia | 467cd | -3 | 250 | 472 | 465 | 4.9 | 4.3 | 13.6 | 2.5 | 1288.8 | 0.9 | 0.1 | MM2 Asia | 0.3 | susp | - | 0.3 | 0.3 | - | - | - | - | 0.6 | 19.9 |
| 60 | 49 | Baker Technology | 51.5cd | +1.5 | 71 | 51.5 | 49 | 17.9 | 3.9 | 5.7 | 0.4 | 104.5 | 70.5 | 33 | MSC | US64 | +3 | 449 | 64.5 | 61 | - | - | - | - | 1.6 | 537.6 |
| 72 | 32 | Banyan Tree | 62cd | +1.5 | 1150 | 62 | 60 | 3.7 | 2.1 | 12.8 | 0.7 | 537.9 | 30.5 | 21 | MTQ | 24 | +0.5 | 213 | 24 | 23.5 | 4.2 | 4.2 | 5.7 | 0.7 | 54 | |
| 48 | 17.2 | Beng Kuang | 48cd | +3.5 | 16854 | 48 | 42 | - | - | 1.3 | 8.3 | 4.6 | 12 | 4 | MYP | 6.2 | -0.3 | 6 | 6.8 | 6.2 | - | - | - | - | 0.4 | 98.7 |
| 105 | 81.5 | Bonvests | 100cd | +0.5 | 695 | 100 | 97.5 | 0.6 | - | 212.8 | 0.5 | 402.2 | 8.9 | 5.4 | ManulifeReit USD | US5.6 | -0.2 | 8125 | 5.8 | 5.4 | 1 | 38.4 | - | - | 0.2 | 99.3 |
| 229 | 103 | Boustead | 215 | +12 | 3248 | 215 | 201 | 3.4 | 2.6 | 16 | 2 | 1231.4 | 223 | 190 | * Mapletree Ind Tr | 206 | +6 | 33341 | 207 | 198 | 1 | 6.6 | - | - | 1.2 | 6121.8 |
| 19.4 | 19.4 | Broadway Ind | 19.4 | susp | - | 19.4 | 19.4 | 2.7 | 2.6 | 7.3 | 0.9 | 91.6 | 137 | 107 | * Mapletree Log Tr | 125 | +6 | 107463 | 127 | 117 | 1.1 | 6.4 | - | - | 1 | 6255.7 |
| 67.5 | 50 | Brook Crompton | 61.5cd | unch | 12 | 61.5 | 58 | - | - | 3.3 | 9.9 | 0.5 | 150 | 115 | * Mapletree PanAsia Co | 141 | +4 | 67547 | 144 | 135 | 1 | 5.7 | - | - | 0.8 | 8882.3 |
| 525 | 319 | Bukit Sembawang | 480 | +5 | 322 | 483 | 469 | 2.2 | 4.2 | 10.9 | 0.8 | 1242.8 | 17.6 | 4 | Marco Polo Marine | 15.8 | -0.1 | 156598 | 16.5 | 15.6 | 0.6 | 0.6 | 22.6 | 2.8 | 618 | |
| 201 | 72 | Bumitama Agri | 186cd | -7 | 10039 | 198 | 184 | 1.4 | 5 | 11.5 | 2.1 | 326.9 | 14.4 | 10.2 | Mermaid Maritime | 12.4cd | +0.1 | 3790 | 12.6 | 12.1 | - | - | - | 9.1 | 0.7 | 275.4 |
| 52 | 35 | Bund Center | 48.5cd | +0.5 | 347 | 49.5 | 48 | 1.3 | 2.9 | 27.1 | 1 | 368.8 | 4.8 | 0.9 | Metis Energy | 4.2 | unch | 4668 | 4.3 | 4 | - | - | - | - | 1.6 | 127.4 |
| 88.5 | 75 | CDL HTrust | 83.5 | +0.5 | 6203 | 84 | 82 | 1 | 6.4 | - | 0.6 | 106.3 | 59.5 | 30.5 | Metro | 47.5 | unch | 383 | 48.5 | 46.5 | 0.9 | 4.2 | 26.4 | 0.3 | 395 | |
| 16.8 | 7 | CDW | 8.6 | +0.1 | 263 | 9 | 8.2 | - | - | 479 | - | 3.8 | 34.5 | 22.5 | Mewah Intl | 30cd | -3 | 617 | 33 | 30 | 4.7 | 2.5 | 8.5 | 0.4 | 452.1 | |
| 2 | 1.1 | CH Offshore | 1.4 | unch | 24256 | 1.5 | 1.3 | - | - | 11.7 | 0.2 | 29.6 | 322 | 148 | Micro-Mechanics | 318 | +51 | 3682 | 322 | 265 | 1 | 1.9 | 55 | 9 | | |

SGX MAINBOARD

| | | | | | | | | | | | Transaction date: Apr 17 | | | | | | | | | | | | | | |
|------------|-----------|------------------|-----------|------|------------|-----------|----------|----------|---------|---------|--------------------------|-------------|------------|-----------|--------------------|-----------|------|------------|-----------|----------|----------|---------|---------|------|-------------|
| 52-Wk High | 52-Wk Low | Company | Last Sale | +/- | Vol ('000) | Week High | Week Low | Div C'vr | GrYld % | Net P/E | P/BV | MCap \$mil | 52-Wk High | 52-Wk Low | Company | Last Sale | +/- | Vol ('000) | Week High | Week Low | Div C'vr | GrYld % | Net P/E | P/BV | MCap \$mil |
| 3950 | 3325 | * UOB | 3740cd | +1 | 10168 | 3783 | 3713 | 1.2 | 4.2 | 13.6 | | 1.3 63053.5 | 120 | 33 | Willas-Array | 78 | - | 78 | 78 | - | - | - | - | 0.8 | 64.2 |
| 410 | 165 | UOB Kay Hian | 390cd | unch | 5923 | 410 | 385 | 2 | 3.2 | 15.6 | | 1.7 3786.2 | 402 | 278 | * Wilmar Intl | 384cd | -3 | 37288 | 390 | 379 | 2.6 | 3.6 | 13.2 | | 0.9 24589.1 |
| 830 | 749 | UOI | 824cd | -2 | 17 | 829 | 820 | 2.1 | 2.8 | 16.9 | | 1.1 503.9 | 176 | 112 | Wing Tai | 164 | +2 | 703 | 165 | 161 | - | 1.8 | - | 0.4 | 1302.1 |
| 1148 | 561 | * UOL | 1016cd | +11 | 6652 | 1043 | 995 | 2.3 | 2.5 | 17.8 | | 0.7 8613 | 22 | 13 | World Precision | 14.7 | +0.5 | 15 | 14.7 | 14.1 | - | - | 44.5 | 0.3 | 58.8 |
| 4.2 | 4.2 | USP Group | 4.2 | susp | - | 4.2 | 4.2 | - | - | - | | 0.1 4.1 | 212 | 68.5 | XMH | 202 | +6 | 223 | 205 | 188 | 3.3 | 1.7 | 17.6 | | 3.8 232.2 |
| 94 | 76 | Uni-Asia Grp | 92.5cd | +1 | 287 | 94 | 91.5 | - | 3.2 | - | | 0.5 72.7 | 47.5 | 35.5 | YHI Intl | 37.5cd | -2 | 151 | 40 | 36 | 1 | 535.8 | 11.4 | 0.4 | 109.6 |
| 55.5 | 27.5 | Union Gas | 46.5 | +1 | 3249 | 48.5 | 46 | 2.7 | 3.4 | 11.8 | | 1.9 147.8 | 124 | 23.5 | YZJ Fin Hldg | 28 | +1.5 | 76438 | 29 | 26 | 2.5 | 12.3 | 3.2 | 0.2 | 1105.6 |
| 69 | 47.5 | UnionSteel | 52.5 | +4.5 | 11 | 60 | 48.5 | 8.3 | 2.5 | 4.9 | | 0.7 62 | 72 | 50.5 | YZJ Maritime | 70cd | +7.5 | 100533 | 71.5 | 60.5 | - | - | - | - | 2436 |
| 57 | 43.5 | UtdHampshReitUSD | US52.5 | +0.5 | 1324 | 52.5 | 50.5 | 1.1 | 7.7 | - | | 0.7 319.3 | 462 | 201 | * YZJ Shipbldg SGD | 409cd | +7 | 73454 | 410 | 395 | 2 | 4.9 | 10.2 | 2.7 | 16233.6 |
| 134 | 50.5 | ValueMax | 118cd | +5 | 3718 | 121 | 110 | 3.6 | 2.3 | 13.2 | | 2 1115.9 | 16 | 8.2 | Yamada Green Res | 12.3 | - | - | 12.3 | - | - | - | - | 0.5 | 21.7 |
| 106 | 61.5 | Valuetronics | 102 | +5 | 9521 | 106 | 94.5 | 1.6 | 4.2 | 15.3 | | 1.7 440.1 | 82.5 | 44.5 | Yanlord Land | 64.5cd | +0.5 | 14026 | 66 | 62.5 | 2.6 | 1.6 | 25.3 | 0.2 | 1249.1 |
| 1698 | 1080 | * Venture Corp | 1639cd | +44 | 3721 | 1640 | 1576 | 1 | 4.9 | 20.8 | | 1.7 4783.8 | 63.5 | 53.5 | Yeo Hiap Seng | 61.5 | +0.5 | 77 | 61.5 | 60 | 0.6 | 3.3 | 55.4 | 0.6 | 379.1 |
| 21.5 | 7.4 | Vibrant Group | 14.1 | +0.3 | 177 | 15 | 13.7 | 0.4 | 1.4 | 156.7 | | 0.4 98.4 | 3.4 | 2.1 | Ying Li Intl | 2.4 | -0.1 | 487 | 2.5 | 2.3 | - | - | - | 0.2 | 61.3 |
| 5.6 | 1.6 | VibroPower | 4 | -0.7 | 40 | 4.7 | 4 | - | - | 16.7 | | 0.5 3 | 9.8 | 6.6 | Yoma Strategic | 8 | +0.5 | 9895 | 8 | 7.5 | - | - | 29.6 | 0.4 | 192.2 |
| 187 | 133 | Vicom | 184cd | +1 | 409 | 187 | 181 | 1.5 | 3.2 | 22.3 | | 4.6 652.4 | 76.5 | 46 | Yongmao | 74.5 | - | - | 74.5 | 74.5 | 9 | 1.3 | 8.2 | 0.4 | 66.1 |
| 10.1 | 6.9 | Vicplas Intl | 8.5 | -0.3 | 351 | 8.8 | 8.3 | 1.8 | 5.3 | 10.2 | | 0.6 43.5 | 67.5 | 39.5 | Zheneng Jinjiang | 60 | unch | 1745 | 61 | 59.5 | - | 3.8 | 7.6 | 0.6 | 872.4 |
| 94 | 40 | Wee Hur | 75.5cd | +2.5 | 30414 | 79 | 71.5 | 9.8 | 1.3 | 12.8 | | 1.1 706.6 | 64 | 8 | Zhongmin Baihui | 44 | - | - | 44 | 44 | 2.3 | 2.3 | 19 | 2.2 | 86.4 |

SGX CATALIST

| 52-Wk High | 52-Wk Low | Company | Last Sale | +/- | Vol ('000) | Week High | Week Low | Div C'vr | GrYld % | Net P/E | P/BV | MCap \$mil | 52-Wk High | 52-Wk Low | Company | Last Sale | +/- | Vol ('000) | Week High | Week Low | Div C'vr | GrYld % | Net P/E | P/BV | MCap \$mil | |
|------------|-----------|------------------|-----------|------|------------|-----------|----------|----------|---------|---------|------|------------|------------|-----------|-------------------|-----------|------|------------|-----------|----------|----------|---------|---------|------|------------|------|
| 6.3 | 3.4 | 9R | 4.2 | +0.3 | 79 | 4.2 | 3.8 | - | - | - | | 3.1 46.8 | 7.3 | 2.1 | LY Corp | 4.4 | - | - | 4.4 | 4.4 | - | - | - | 0.3 | 21.5 | |
| 1.2 | 1.1 | AU Medtech | 0.6 | unch | 57035 | 0.7 | 0.5 | - | - | - | | 1 10.3 | 28 | 20 | Leong Guan Hldgs | 20 | -0.5 | 872 | 21.5 | 20 | - | - | - | - | 4.1 | |
| 0.1 | 0.1 | AP Strategic | 0.1 | unch | - | 0.1 | 0.1 | - | - | - | | 1 35 | 35 | 6.1 | LincoTrade | 31 | +0.5 | 66 | 31 | 30 | 1.9 | 1 | 23.3 | 5.1 | 56.4 | |
| 3.4 | 1.8 | Abundance Intl | 2.6cd | unch | 968 | 2.6 | 2.4 | - | - | 86.7 | | 0.7 50 | 3.7 | 1.8 | Livingstone | 2.9 | +0.1 | 2550 | 3.1 | 2.8 | - | - | 17.1 | 2.4 | 18.3 | |
| 5.8 | 2.9 | Accrest | 4.9 | +0.2 | 54 | 5.2 | 4.8 | - | - | - | | 0.7 15.7 | 106 | 30 | Lum Chang Creat | 104 | +23 | 4153 | 106 | 81.5 | - | - | - | - | 327.6 | |
| 4.1 | 2.6 | Acesian Partners | 2.8 | unch | 308 | 2.9 | 2.8 | - | - | 25.5 | | 0.6 14 | 7.8 | 3 | Luminor | 5.6cd | +0.4 | 1226 | 5.6 | 3.4 | - | - | - | 0.5 | 9.4 | |
| 3.4 | 1.6 | AcroMeta | 2.1 | +0.1 | 20992 | 2.2 | 1.9 | - | - | - | | 1.4 8.3 | 149 | 21 | METAOPTICS LTD | 94.5 | +8 | 5443 | 100 | 82.5 | - | - | - | - | 229.3 | |
| 16.8 | 7 | Advanced | 11.7 | -1.3 | 90 | 15.8 | 9.6 | - | - | - | | 0.4 12.1 | 39 | 2.3 | MSM Intl | 38.5 | - | - | 38.5 | 38.5 | - | - | 385 | 3.9 | 40.6 | |
| 0.9 | 0.2 | AdvancedSystems | 0.4 | +0.1 | 14224 | 0.4 | 0.3 | - | - | - | | 0.8 6.8 | 6 | 2 | Mary Chia | 2.9 | -0.4 | 8570 | 3.8 | 2.9 | - | - | - | - | 9.7 | |
| 13.5 | 7.6 | Advancer Global | 12.1 | +0.2 | 50 | 12.1 | 11.8 | - | - | 22.4 | | 0.9 30.5 | 16.2 | 2.7 | MeGroup | 10 | -4.7 | 4623 | 15.7 | 2.7 | 9.2 | 2.3 | 4.7 | 0.7 | 12 | |
| 0.5 | 0.1 | Adventus | 0.4 | +0.1 | 39078 | 0.5 | 0.3 | - | - | - | | 1 13.2 | 8.4 | 0.6 | MediLifestyle | 5 | unch | 101860 | 5.5 | 4.5 | - | - | - | - | 18.9 | |
| 39 | 17 | Aedre Group | 28 | -2.5 | 25 | 30.5 | 28 | - | - | - | | 2.7 60.5 | 25.5 | 19.4 | Medinet | 23.5 | +1 | 3 | 23.5 | 22.5 | 1.2 | 7.1 | 18.4 | 1.8 | 31.6 | |
| 16 | 8.8 | Alliance HC | 16 | +0.9 | 51 | 16 | 15.3 | - | - | 45.7 | | 1.4 33.3 | 14.5 | 10.9 | Medtecs Intl | 11.8 | -0.5 | 6340 | 12.2 | 11.8 | - | - | - | 0.4 | 64.8 | |
| 37.5 | 20.5 | Alpina Holdings | 37 | - | 37 | 37 | 37 | 6.9 | 0.5 | - | | 2.3 68.2 | 50 | 35 | MegaChem | 43cd | - | - | 43 | 43 | 5.9 | 2.3 | 7.3 | 1 | 57.3 | |
| 2.8 | 1.9 | Alsea | 2.4 | +0.3 | 7016 | 2.5 | 2.2 | - | - | - | | 1 83.8 | 2.8 | 1 | Memintec Hldgs | 1.1 | unch | 1064 | 1.3 | 1.1 | - | - | - | 0.6 | 18.6 | |
| 3.1 | 1.5 | Amplefield Ltd | 2.8 | +0.5 | 428 | 2.8 | 2.3 | - | - | - | | 0.5 25.2 | 11 | 2 | Mencast | 7.6 | +1.9 | 4782 | 7.9 | 5.6 | - | - | 14.3 | 1.1 | 35.7 | |
| 8 | 5.1 | AnnAik | 7.6cd | - | - | 7.6 | 7.6 | 2.4 | - | 10.7 | | 0.3 22.2 | 1 | 0.3 | Meta Health | 0.4 | -0.1 | 58201 | 0.7 | 0.4 | - | - | - | - | 5.3 | |
| 0.1 | 0.1 | Annica | 0.1 | unch | 100 | 0.1 | 0.1 | - | - | - | | 25 22.3 | 5.2 | 1.6 | Metech Intl | 3.3 | +0.1 | 0 | 3.3 | 3.2 | - | - | - | - | 6.6 | |
| 28 | 2.6 | Aoxin Q & M | 20.5 | unch | 110356 | 23 | 19.4 | - | - | - | | 2.1 209.7 | 0.9 | 0.3 | Miyoshi | 0.6 | unch | 4776 | 0.7 | 0.5 | - | - | - | - | 0.1 | 10.1 |
| 12 | 2.1 | Asia Vets | 8.8 | -0.5 | 295 | 9.3 | 8.5 | - | - | - | | 0.8 12.9 | 101 | 20.3 | MoneyMax Fin | 88cd | +7 | 4775 | 92 | 79 | 6.2 | 1.6 | 20.4 | 2.1 | 778.4 | |
| 3.2 | 1 | AsiaMedic | 2.4 | -0.2 | 29801 | 2.3 | 2.4 | - | - | 26.7 | | 1.9 27.8 | 15 | 10.2 | Mooreast | 11.5 | +0.5 | 0 | 11.5 | 11 | - | - | - | 1.6 | 29.8 | |
| 1.8 | 0.3 | AsiaPhos | 0.9 | +0.1 | 9203 | 0.9 | 0.8 | - | - | 9 | | 3.9 13.4 | 2.3 | 1.6 | Nanyang NewDev | 2.2 | susp | - | 2.2 | 2.2 | - | - | - | 0.9 | 11.3 | |
| 0.5 | 0.1 | Asian Micro | 0.4 | +0.1 | 1777 | 0.4 | 0.3 | - | - | - | | 5 10.7 | 6.3 | 2.8 | Natural Cool | 4.7 | +0.3 | 67 | 4.9 | 4.4 | - | - | 7.7 | 0.7 | 11.8 | |
| 0.4 | 0.2 | Asiatic | 0.3 | -0.1 | 8340 | 0.4 | 0.3 | - | - | 10 | | 0.5 9.7 | 2.4 | 1 | Net Pacific Hldgs | 1.4 | unch | 85 | 1.4 | 1.4 | - | - | - | 0.5 | 7.4 | |
| 39.5 | 11.7 | Aspial Lifestyle | 39 | +7 | 20050 | 39.5 | 30.5 | 2.4 | 1 | 17.4 | | 3 645.3 | 0.5 | 0.2 | New Wave | 0.4 | unch | 82 | 0.4 | 0.4 | - | - | - | 0.6 | 6.9 | |
| 5.5 | 3 | Assurance HC | 5.4 | -0.1 | 0 | 5.4 | 5.4 | - | - | - | | 2 13.1 | 5.1 | 3.5 | Neocraft | 4.4 | +0.6 | 213 | 4.4 | 3.6 | - | - | 23.2 | 0.1 | 15.5 | |
| 4.5 | 3.1 | Astaka | 4.5 | - | - | 4.5 | 4.5 | - | - | - | | 4 84.1 | 8.8 | 0.9 | NoonTalk Media | 5.4 | -1.6 | 83 | 7 | 0.9 | - | - | - | 20.8 | 10.7 | |
| 17 | 5.1 | Atlantic Nav | 11.7 | unch | 321 | 12.2 | 11.4 | 0.9 | - | 0.8 | | 1.3 61.3 | 7.1 | 3 | OCTOPUS | 6.1 | unch | 49586 | 6.7 | 5.8 | - | - | - | - | 9.7 | 98.2 |
| 50 | 23.5 | Attika Grp | 42 | +1 | 516 | 42 | 38.5 | 2.8 | 1.8 | 20.3 | | 5.5 57.1 | 8.8 | 2.8 | OIO | 2.8 | -2.5 | 30 | 5.3 | 2.8 | - | - | - | - | 6.1 | |
| 33.5 | 23 | Audience | 25 | -1.5 | 47 | 27 | 25 | 1.7 | 6 | 9.5 | | 2 58.2 | 14 | 9.8 | OTS Holdings | 11.3 | +0.2 | 25 | 11.3 | 11.2 | - | - | - | 0.9 | 24.2 | |
| 0.3 | 0.1 | Autago | 0.2 | unch | 4720 | 0.2 | 0.1 | - | - | - | | 2.5 5.5 | 3.3 | 2 | OUE Healthcare | 2.9 | +0.1 | 6274 | 3 | 2.7 | - | - | - | 0.5 | 128.9 | |
| 1.6 | 0.9 | B Wilshire | 1 | unch | 1192 | 1.1 | 0.9 | - | - | - | | 14.8 | 6 | 2.1 | Ocean Sky Intl | 3.9 | -0.1 | 62 | 4.3 | 3.9 | - | - | - | 0.4 | 16.8 | |
| 0.3 | 0.1 | BACUI TECH | 0.1 | unch | 191 | 0.2 | 0.1 | - | - | 3.3 | | 0.6 4.5 | 0.9 | 0.4 | OceanScape Intl | 0.7 | susp | - | 0.7 | 0.7 | - | - | - | - | 3.3 | |
| 4.9 | 2 | Bromat | 2 | - | 2 | 2 | 2 | - | - | - | | 9.1 | 12.1 | | | | | | | | | | | | | |